

## VINE STREET APARTMENT BUILDINGS HISTORIC DISTRICT, 4-48 Vine St., Hartford, CT

### Attachments

#### Maps & Plans (6 sheets total)

Map A: City of Hartford – Neighborhood Map, showing location of 4-48 Vine St. in the Upper Albany neighborhood (City of Hartford, March 2010)

Map B: City of Hartford – Historic Districts & Individual Historic Properties, showing location of 4-48 Vine St. adjacent to the Upper Albany Historic District (City of Hartford, March 2010)

Map C: National Register of Historic Places – Map of Upper Albany Historic District, Hartford, CT showing location of 4-48 Vine St. adjacent to historic district boundary (NR 1986)

Map D: Vine St. parcel lines & building footprints (detail), Abrams Aerial Survey Corp. (Dec. 1962)

Map E: Aerial view of Vine St., Hartford, CT showing the location of the ten apartment blocks at 4-48 Vine St. (Bing maps, 2011)

Plans F: Site Plan of Horace Bushnell Apartments, 4-40 Vine St., Hartford, CT, prepared by Clarke-Tamaccio Architects, P.C. (January 2000).

#### Photographs (18 total)

*(All photographs by Gregory Farmer, Connecticut Trust for Historic Preservation, Nov. 2010)*

Photo 01: View of Vine St. apartments blocks, Hartford, looking northeast (left to right: #24-26, #20-22, #18-16, tree in foreground, #12-14, #8-10, #4-6)

Photo 02: View of Vine St. apartments blocks, Hartford, looking southwest (left to right: #32-24, #28-30, #24-26, #22-20, #16-18, 12-14, 8-10, #4-6)

Photo 03: Exterior view of 4-6 Vine St., west and south elevations

Photo 04: Exterior view of 8-10 Vine St., west and south elevations

Photo 05: Exterior view of 12-14 Vine St., west and south elevations

Photo 06: Exterior view of 16-18 Vine St., west and south elevations

Photo 07: Exterior view of 20-22 Vine St., west and south elevations

Photo 08: Exterior view of 24-26 Vine St., west and south elevations

Photo 09: Exterior view of 28-30 Vine St., west and south elevations

Photo 10: Exterior view of 32-34 Vine St., west and south elevations

Photo 11: Exterior view of 36 Vine St., west and south elevations

Photo 12: Exterior view of name plaque between 36 & 40 Vine St., west elevation

**VINE STREET APARTMENT BUILDINGS HISTORIC DISTRICT, 4-48 Vine St., Hartford, CT**

Photo 13: Exterior view of 40 Vine St., west and south elevations

Photo 14: Exterior view of 42-44 Vine St., west and south elevations

Photo 15: Exterior view of 46-48 Vine St., west and south elevations

Photo 16: View looking northwest from Vine St. between Albany Ave. & Mather St.

Photo 17: View looking west from Vine St. between Albany Ave. & Mather St.

Photo 18: View of Liberty Christian Church (former Horace Bushnell Congregational Church) at the northwest corner of Albany Ave. & Vine St., looking northwest

*End of photographs*

VINE STREET APARTMENT BUILDINGS HISTORIC DISTRICT, 4-48 Vine St., Hartford, CT



Photo 01: View of Vine St. apartments blocks, Hartford, looking northeast (left to right: #24-26, #20-22, #18-16, tree in foreground, #12-14, #8-10, #4-6)



Photo 02: View of Vine St. apartments blocks, Hartford, looking southwest (left to right: #32-24, #28-30, #24-26, #22-20, #16-18, 12-14, 8-10, #4-6)

VINE STREET APARTMENT BUILDINGS HISTORIC DISTRICT, 4-48 Vine St., Hartford, CT

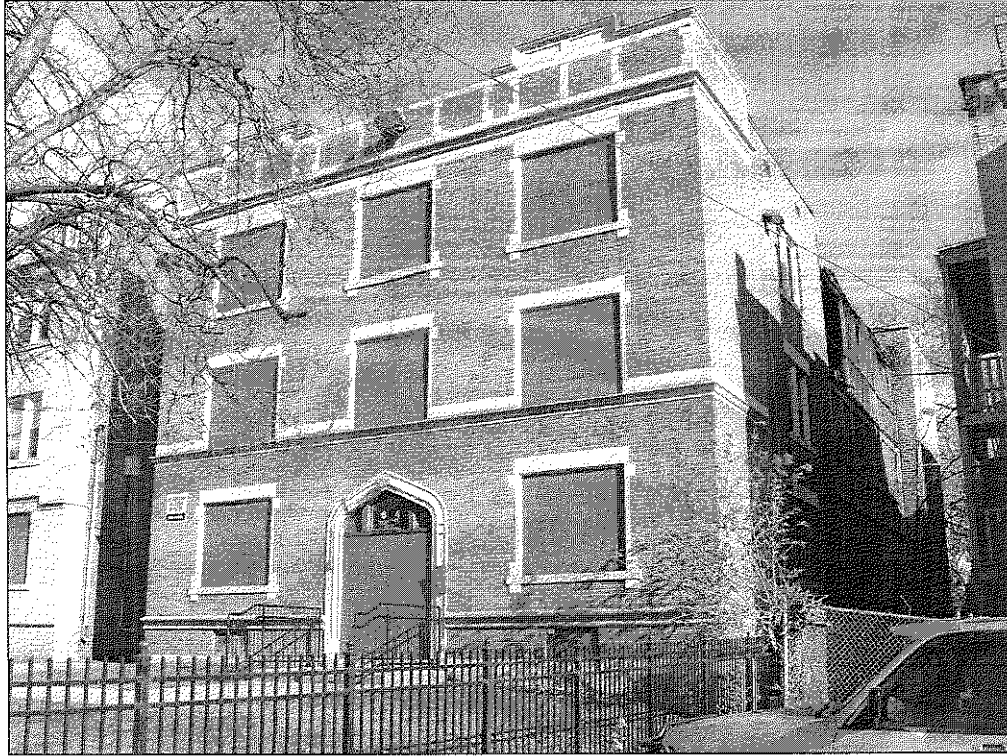


Photo 03: Exterior view of 4-6 Vine St., west and south elevations

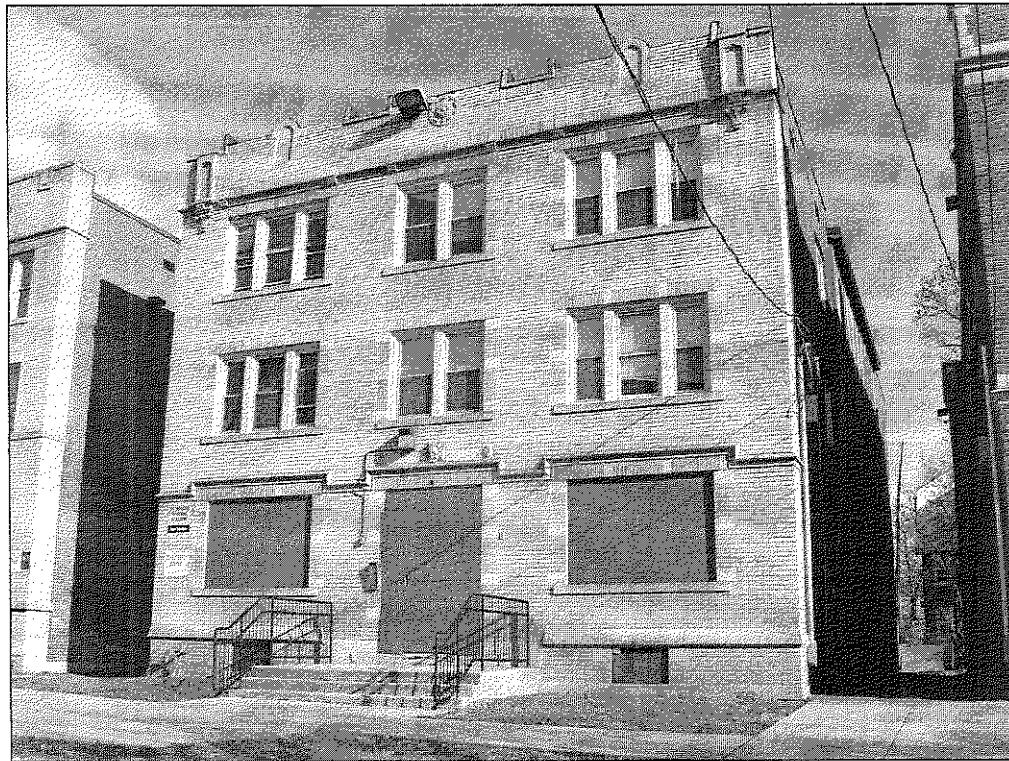


Photo 04: Exterior view of 8-10 Vine St., west and south elevations



VINE STREET APARTMENT BUILDINGS HISTORIC DISTRICT, 4-48 Vine St., Hartford, CT

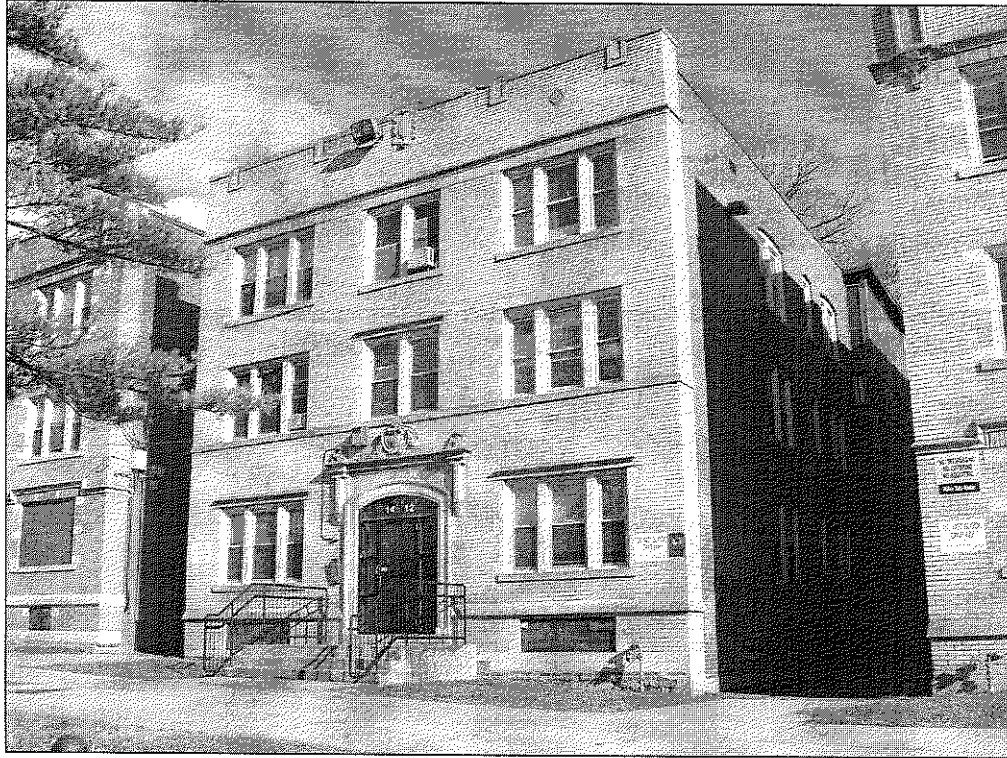


Photo 05: Exterior view of 12-14 Vine St., west and south elevations

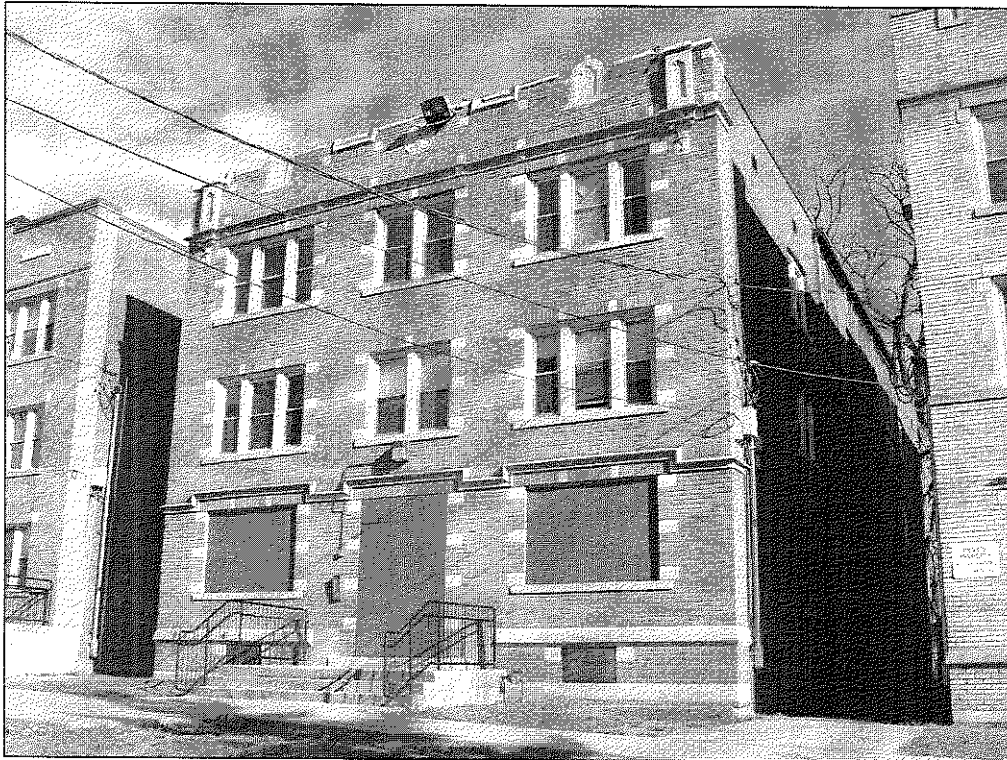


Photo 06: Exterior view of 16-18 Vine St., west and south elevations

VINE STREET APARTMENT BUILDINGS HISTORIC DISTRICT, 4-48 Vine St., Hartford, CT

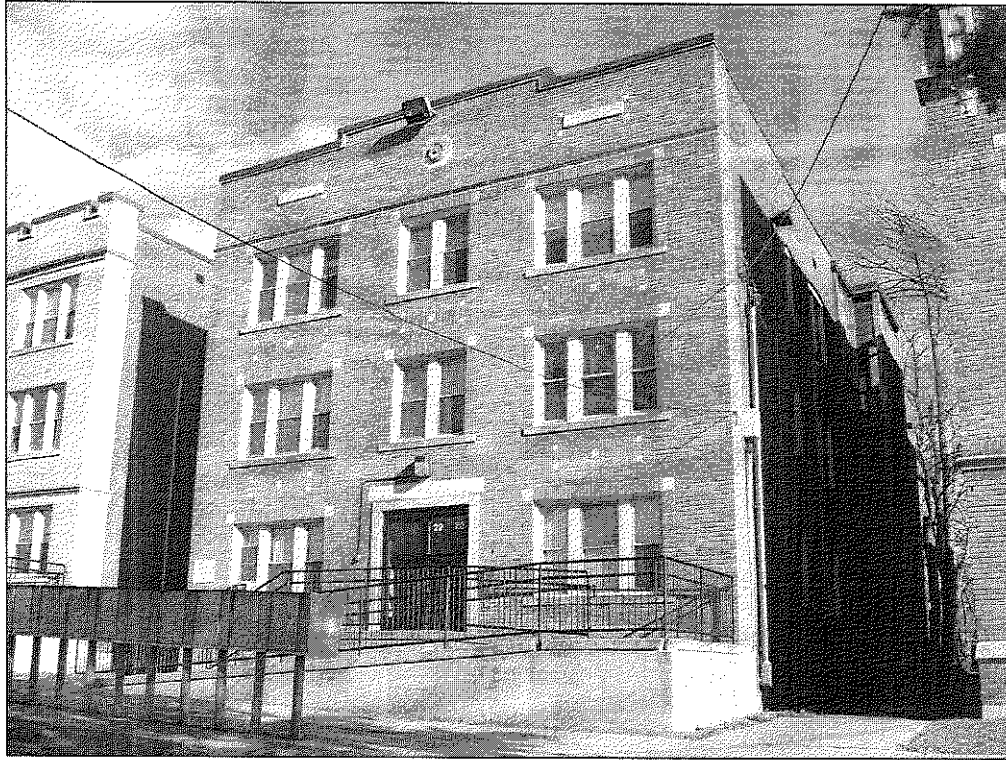


Photo 07: Exterior view of 20-22 Vine St., west and south elevations



Photo 08: Exterior view of 24-26 Vine St., west and south elevations

**VINE STREET APARTMENT BUILDINGS HISTORIC DISTRICT, 4-48 Vine St., Hartford, CT**

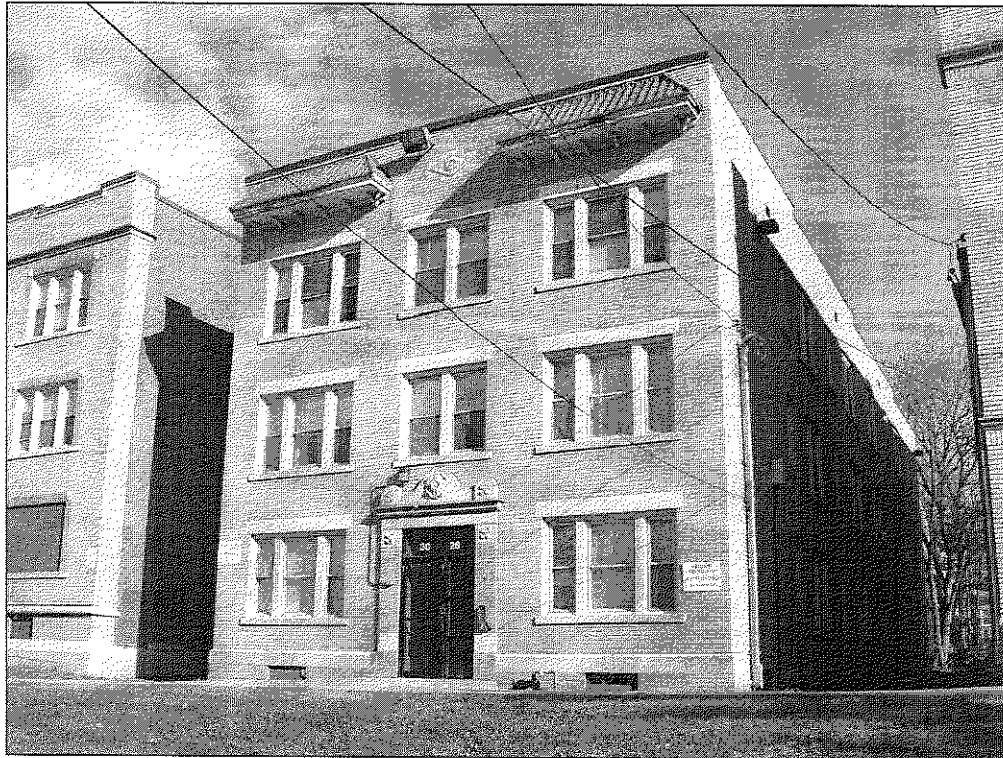


Photo 09: Exterior view of 28-30 Vine St., west and south elevations

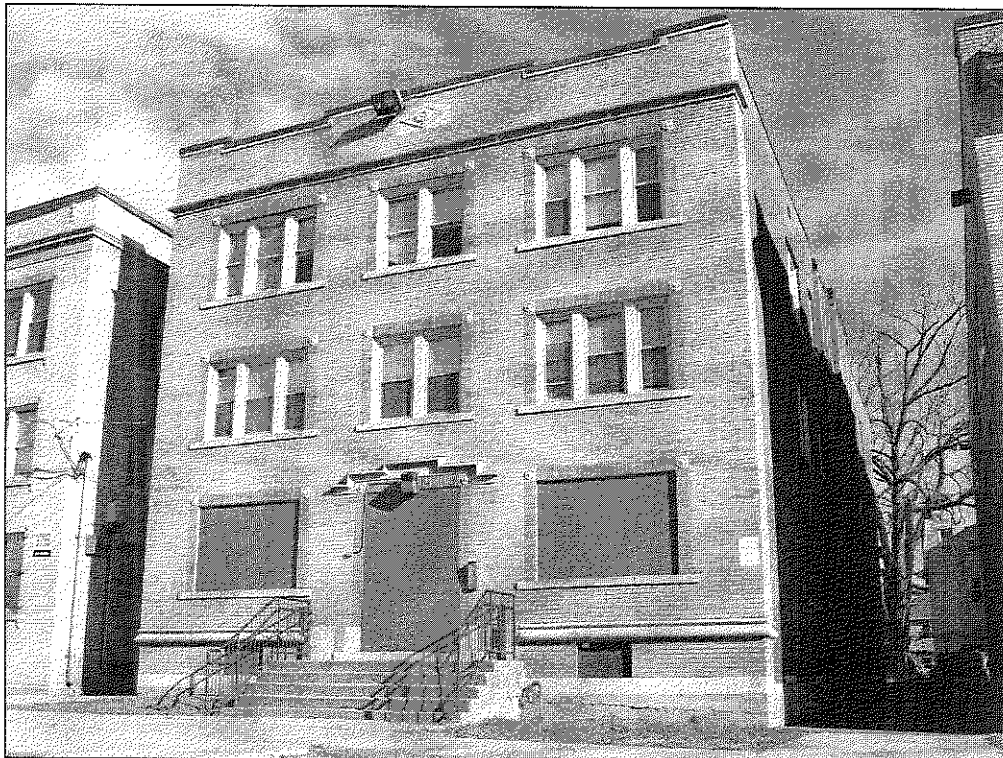


Photo 10: Exterior view of 32-34 Vine St., west and south elevations



VINE STREET APARTMENT BUILDINGS HISTORIC DISTRICT, 4-48 Vine St., Hartford, CT

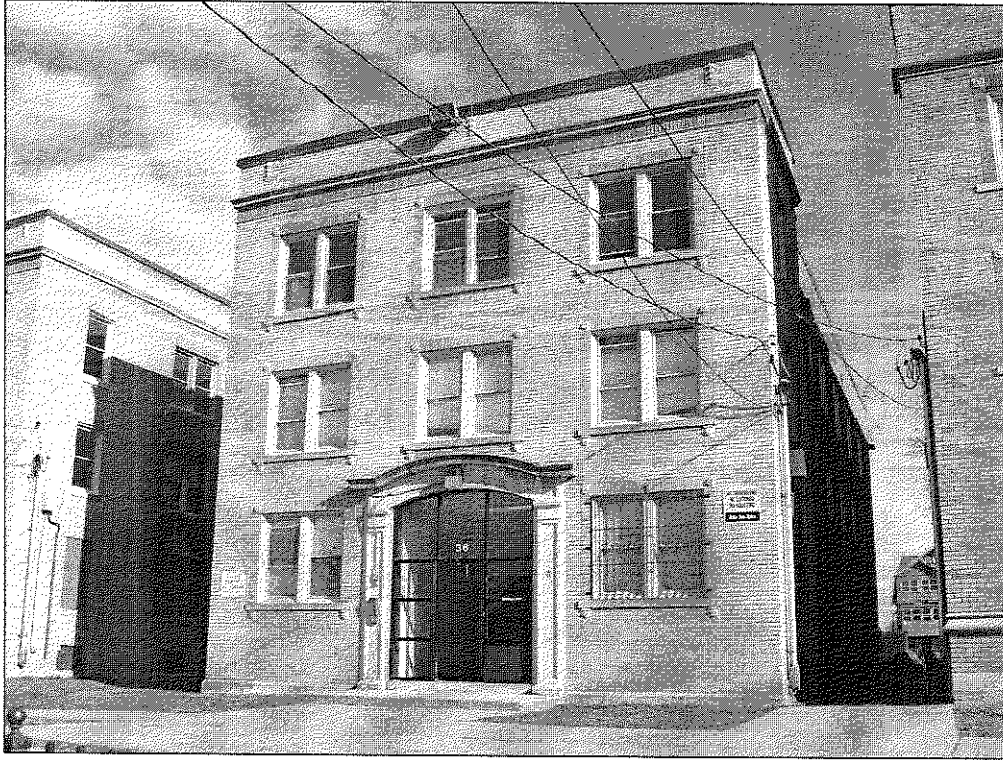


Photo 11: Exterior view of 36 Vine St., west and south elevations

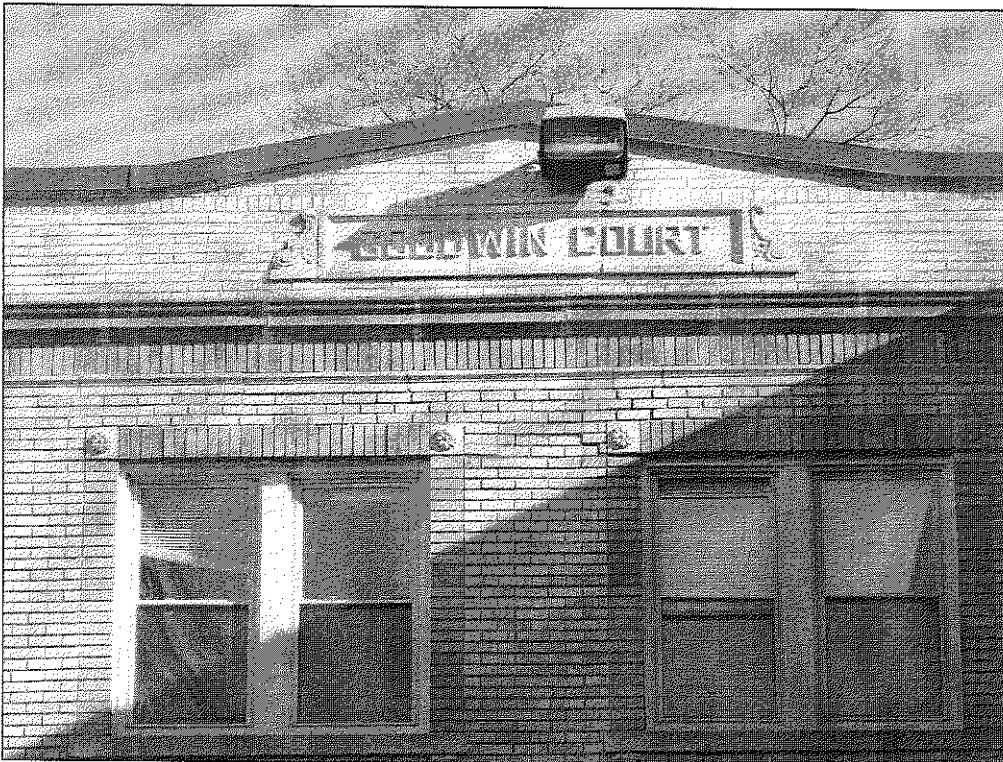


Photo 12: Exterior view of name plaque between 36 & 40 Vine St., west elevation



VINE STREET APARTMENT BUILDINGS HISTORIC DISTRICT, 4-48 Vine St., Hartford, CT



Photo 13: Exterior view of 40 Vine St., west and south elevations



Photo 14: Exterior view of 42-44 Vine St., west and south elevations

VINE STREET APARTMENT BUILDINGS HISTORIC DISTRICT, 4-48 Vine St., Hartford, CT

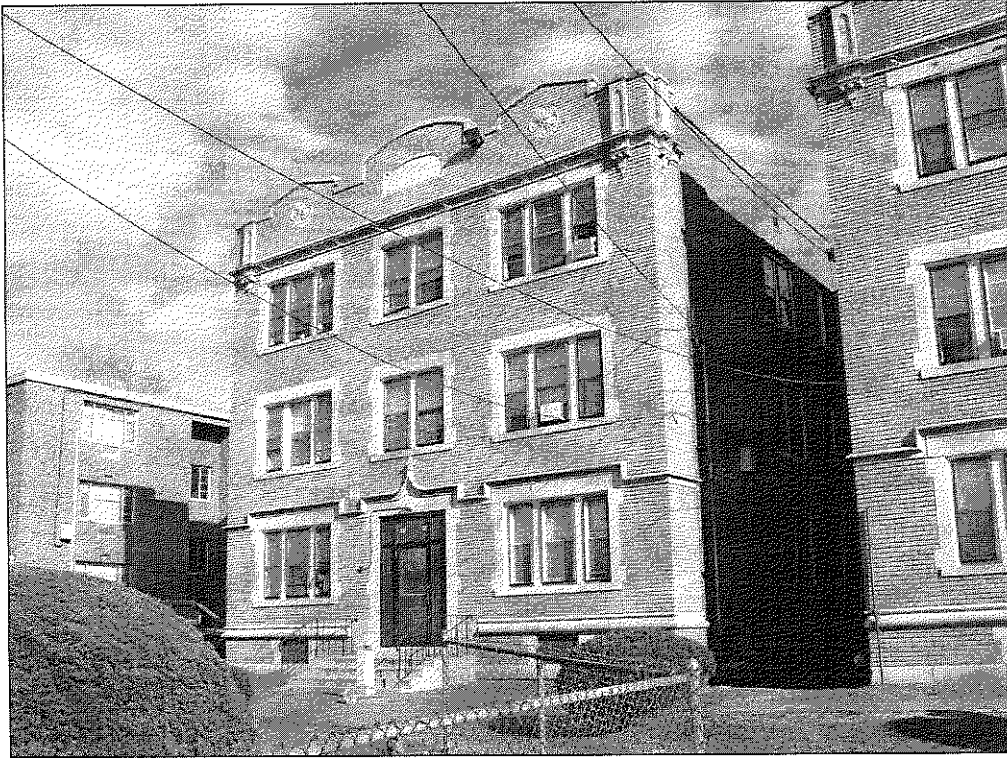


Photo 15: Exterior view of 46-48 Vine St., west and south elevations



Photo 16: View looking northwest from Vine St. between Albany Ave. & Mather St.

**VINE STREET APARTMENT BUILDINGS HISTORIC DISTRICT, 4-48 Vine St., Hartford, CT**



Photo 17: View looking west from Vine St. between Albany Ave. & Mather St.

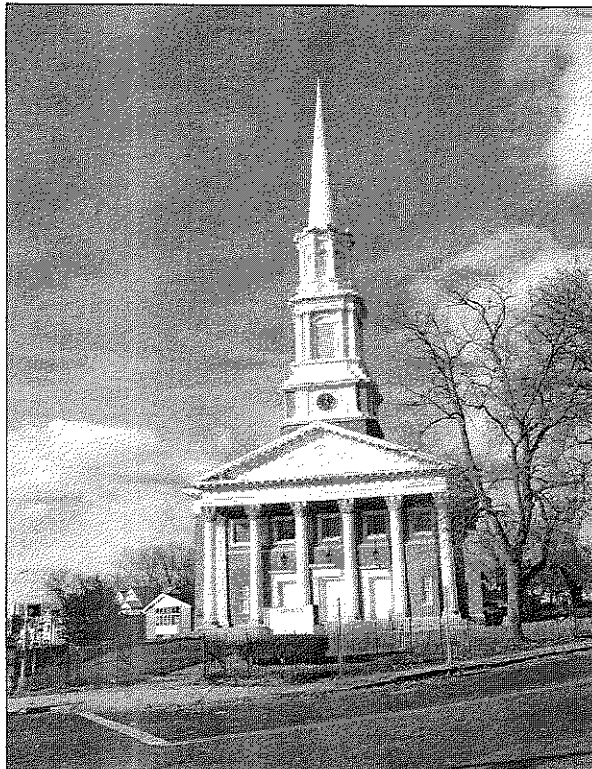


Photo 18: View of Liberty Christian Church (former Horace Bushnell Congregational Church) at the northwest corner of Albany Ave. & Vine St., looking northwest