

## PROPERTY NAME

Washington Street Historic District, Hartford, CT

Page 1

United States Department of the Interior

National Register of Historic Places Registration Form

*John has his copies***DRAFT**

## 1. NAME OF PROPERTY

Historic Name: Washinton Street Historic DistrictOther Name/Site Number: NA

## 2. LOCATION

Street & Number: 207, 215, 217-219, 225, 233, 239, 241, 243, 247 Washinton Street Not for publication: NACity/Town: Hartford Vicinity: NA  
State: CT County: Hartford Code: 003 Zip Code: 06106

## 3. CLASSIFICATION

## Ownership of Property

Private: xPublic-local:    Public-State:    Public-Federal:    

## Category of Property

Building(s):    District: xSite:    Structure:    Object:    

## Number of Resources within Property

## Contributing

5      5

## Noncontributing

1 buildings    sites    structures    objects1 TotalNumber of Contributing Resources Previously Listed in the National Register: NAName of related multiple property listing: NA

## 4. STATE/FEDERAL AGENCY CERTIFICATION

As the designated authority under the National Historic Preservation Act of 1986, as amended, I hereby certify that this \_\_\_ nomination \_\_\_ request for determination of eligibility meets the documentation standards for registering properties in the National Register of Historic Places and meets the procedural and professional requirements set forth in 36 CFR Part 60. In my opinion, the property \_\_\_ meets \_\_\_ does not meet the National Register Criteria.

\_\_\_\_\_  
Signature of Certifying Official\_\_\_\_\_  
Date\_\_\_\_\_  
State or Federal Agency and Bureau

In my opinion, the property \_\_\_ meets \_\_\_ does not meet the National Register criteria.

\_\_\_\_\_  
Signature of Commenting or Other Official      Date\_\_\_\_\_  
State or Federal Agency and Bureau

## 5. NATIONAL PARK SERVICE CERTIFICATION

I, hereby certify that this property is:

\_\_\_ Entered in the National Register \_\_\_\_\_  
\_\_\_ Determined eligible for the National Register \_\_\_\_\_  
\_\_\_ Determined not eligible for the National Register \_\_\_\_\_  
\_\_\_ Removed from the National Register \_\_\_\_\_  
\_\_\_ Other (explain): \_\_\_\_\_

\_\_\_\_\_  
Signature of Keeper\_\_\_\_\_  
Date of Action

## PROPERTY NAME

Washington Street Historic District, Hartford, CT

Page 3

United States Department of the Interior

National Register of Historic Places Registration Form

## 6. FUNCTION OR USE

Historic: DOMESTIC Sub: single dwelling  
RELIGION religious facility

Current: FUNERARY Sub: funeral home  
COMMERCE/TRADE professional  
SOCIAL civic

## 7. DESCRIPTION

## Architectural Classification:

LATE VICTORIAN/Italianate, Second Empire,  
Queen Anne  
20TH CENTURY REVIVAL/Colonial Revival

## Materials:

Foundation: BRICK, STONE/Sandstone  
Walls: BRICK, WOOD/Shingles, Clapboards  
Roof: STONE/Slate, ASPHALT, ASBESTOS

## Describe Present and Historic Physical Appearance.

The Washington Street Historic District consists of eight properties on the west side of Washington Street four blocks south of the state Capitol in Hartford, Connecticut. It is the only group of houses remaining from the mile-long Grand Avenue or *boulevard* of large and elaborate residences created along Washington Street in the fourth quarter of the 19th century. Only two other houses have survived the grand days of Washington Street, the Lucius Barbour House, 1865 and 1890s, 130 Washington Street, and the Emma J. Young House, 1899, 322 Washington Street, both on the east side of the street well north and south of the district. The eight properties in the district break down to five contributing houses, two vacant parcels once the sites of significant houses, and one institution less than 50 years old on the site of a 19th-century church. (Photographs 1, 2, 3; Figure 1)

Parcels in the district range from 55 feet to 75 feet in frontage along Washington Street, with 130 feet to 180 feet of depth. Starting from the north at Ward Street, the first house in the district is 207 Washington Street, a well-executed Federal Revival brick structure built in 1939 on the site of two earlier larger houses. (Photographs 4, 5) Next door to the south is 215 Washington Street, a well-preserved c. 1875 brick Second Empire residence. (Photographs 6, 7) Next to it at 217-219 Washington Street is an Italianate house built c. 1870 with large early-20th-century rear addition. (Photographs 8, 9, 10) A contemporary 1967 brick institution designed with classical references occupies the northwest corner of Washington and Jefferson Streets. (Photograph 10)

Across the road, south of Jefferson Street, Irving S. Covell in 1899 built a large and appropriately complex, for the style, Queen Anne frame house notable for its two towers and wraparound porch. (Photographs 11, 12) The parcel now incorporates land of a houses that formerly stood in the row along Jefferson Street. The district's two vacant parcels are next south, 239 Washington Street and 241-243 Washington Street. 239 Washington Street was the location of an early-20th-century brick and frame home with front bow at south end of front elevation and side bow at east (front) corner of north elevation. 241-243 Washington Street was a c. 1870-brick double-bay double house; a central bearing wall divided the building between two owners. Finally, on the northwest corner of Madison St., stands the 1879 brick Second Empire residence of Samuel N. Kellogg. (Photographs 13, 14, 15)

The existing buildings are described at greater length in the Inventory which follows.

**Inventory**

The entry for each building commences with a C or NC, indicating whether the property is considered to be Contributing or Non-Contributing to the historical and architectural significance of the district. Vacant parcels are not so designated, and are not included in the totals at Item 3. Dates are taken from Hartford city atlases, Hartford Land Records, and *Hartford Architecture, Volume Two: South Neighborhoods*.

C 207 Washington Street. 1939 Asa J. Dion House Harold L. Brown, architect 2-story brick Federal Revival square flat-roofed 3-bay central entrance house, 36" x 37". Brick walls extend to grade. Half-round portico supported by tapered posts has roof-top half-round iron railing. Carefully detailed doorway consists of 6-panel door flanked by paired slender engaged half-round columns which frame narrow sidelights under radially glazed semi-elliptical transom. Tall first-floor windows partially infilled with wood panels at bottom are set back in recessed round-arched wall arches. At second floor central window is octagonally glazed with small panes, while 6-over-6 windows left and right display S-shaped hardware from former blinds. These 6-over-6s and all other windows in house have splayed brick lintels and wood sills. At height of second-floor ceiling, molded wooden cornice forms strong horizontal line below brick attic.

On north side elevation, first floor, single 1-over-1 window is followed by wide chimney, then three 1-over-1s and one narrow 4-over-4. South side elevation has four windows at each floor. Rear elevation features central door flanked by 1-over-1 window and two narrow 1-over-1s. Second floor rear has paired narrow 4-over-4s flanked by 6-over-6s. Molded cornice and attic extend around all four sides of house. (Photographs 4,5)

C 215 Washington Street c. 1875 James Clark House 2-story brick Second Empire narrow 26' x 50' rectangular house of two bays offset to north, on brownstone foundation, plus 22' x 17' ell. To north 6' x 8' front entrance porch is approached by concrete steps to concrete floor where square columns on paneled pedestals at front and engaged half-columns at rear support low hipped roof. Engaged half columns are embellished with tall parallel recessed channels and Baroque carved capitals. (Photograph 7) Front door pattern is four tombstone lights over four panels, flanked by plain sidelights under plain rectangular transom. Space to south is occupied by two pairs of tall 1-over-1-over-1 windows using brownstone foundation as sill, under common cast-stone lintel. Second-floor fenestration is two pairs of 1-over-1 windows with common cast-stone sills and lintels. Above, five vertical console brackets support soffit of mansard roof, which is covered with asphalt shingles and has two low pedimented dormers, each with 1-over-1 window.

North side elevation, at both first and second floors, has plain brick wall toward front, followed by four 2-over-2 windows and chimney. Eight brackets support mansard. On south side elevation, single 2-over-2 window is followed by 1-story wood 3-sided 3' x 10' oriel, two 2-over-2s, and single small raised window. Second floor is similar except for two round-arched 2-over-2s above oriel. (Photograph 6)

Ell is set back, lower, under two dormers in rear mansard roof of main block. Ell is flat-roofed and without brownstone foundation. In 3-bay rear elevation, first floor, south door has been converted to window; its bracketed shed-roofed hood is still in place. Second floor has two segmentally arched 2-over-2s. Side elevations have two windows or doors at each floor.

C 217-219 Washington Street c. 1860/1870 John Knous House 2¾-story brick Italianate 3-bay 37' x 32' flat-roofed house on brownstone foundation with 3-story 35' x 37' rear addition, painted cream/gray with gray porch, lintels, and sills. Brownstone steps lead up to shallow 8' x 2' central portico of round columns which support paneled architrave, frieze, and low bracketed and pedimented roof. In replacement doorway narrow 3½" sidelights are on either side of 6-panel door under half-round clear glass transom. Left and right of entrance are paired originally floor-to-ceiling 1-over-1 windows partially infilled at bottom with wood panels. Window lintels are low pediments. At second floor, gray painted sills of left and right paired 1-over-1s rest on impost blocks. Paired windows share pedimented lintel. Lintel of central pair is half-round in shape and section, with Baroque keystone. Three third-floor pairs of 1-over-1s have paired segmental lintels. Modest roof overhang above is without brackets.

North side elevation has three 1-over-1 windows, tall, short, tall, with flat lintels, at each floor. On south side elevation, first floor, single tall 1-over-1 is followed by small 1-over-1, then 3-sided 8' x 3' wood oriel in front of brick wall of connector to 223-225 Washington Street, built in 2001. (Photograph 9) Second floor is same as north elevation, followed by single 1-over-1 with segmental lintel in rear block before connector. Central small window is infilled. Third-floor fenestration is same as second-floor, except central small window continues in place.

Rear block is full three stories, without roof overhang. Windows on north side elevation, first floor, are single, double, single 1-over-1s with segmental lintels at all three floors. At rear, sequential pattern is 1-over-1, infilled door, and



small 1-over-1, repeated, at each floor. On south side elevation there is one window at each floor behind connector to 225 Washington Street. (Photographs 8, 9)

C 225 Washington Street 1967 Salvation Army 2-story brick 54' x 124' contemporary brick flat-roofed building with classically inspired monumental arcade. Building faces south, toward Jefferson Street. Washington Street (east side) elevation consists of open arcade of three 2-story arches in front of rounded unbroken brick wall. On north, arcade returns one arch to connector to 217-219 Washington Street, then continues three blind arches to rear. On south elevation open arcade returns for three arches to narrow vertical band of glazing followed by four blind arches. Entrance is in second blind arch. Remaining two westerly blind arches have large picture windows at first floor. Rear elevation is composed of three blind arches glazed at top. Overall, building has minimum fenestration. (Photographs 9, 10)

C 233 Washington Street Irving S. Covell House 1899 2-story frame Queen Anne 38' x 77' multi-roofed house with prominent wraparound porch connecting east front entrance on Washington Street with north side entrance on Jefferson Street. Synthetic siding covers what were probably original clapboards at first floor, shingles above. Bluestone/slate sidewalk from Washington Street leads in to steps under projecting roof section of porch and main front Washington Street entrance. Sidewalks along Washington and Jefferson Street also remain bluestone/slate in part. Porch posts are round, tapered, paired and clustered columns on paneled pedestals which form part of porch balustrade. Part of original porch apron, paneled, is in place at south end of porch. Wide front doorway is boarded up. Porch is rounded at northeast corner (toward intersection of Washington and Jefferson Streets) following rounded shape of tower, which is front north corner of house. Three windows at first floor of this bay, i.e., first floor of tower, are boarded up. At second floor of Washington Street (east front) elevation paired 1-over-1 windows are over front entrance. Three windows are in second floor of tower, 1-over-1 to north and south, high rectangular in center (east). Roof above is hexagonal bell shaped, with finial, to south, conical, over tower, to north, with chimney between. Pyramidal roof rises behind them.

On Jefferson Street (north side) elevation, porch extends to side entrance of door flanked by windows followed by segmental wall of second tower and second side door. At second floor front tower has two more windows on this elevation. Single 1-over-1 window separates towers, and there are three windows in north elevation of second round tower. Hipped-roof attic dormer with paired narrow 1-over-1s is between elevation's two tower roofs.

Added tall 2-story brick 20' x 43' section with two garage doors at grade, opening onto Jefferson Street, lies west of main block. Lot of frame 187 Jefferson Street, next west, absorbed into this parcel in early 20th century. On south elevation of 233 Washington Street, similar brick construction forms 6' x 27' porch enclosure to main house.

On south side elevation, from front, first floor, there is wide window, boarded up, in space before brick side entrance enclosure. On second floor, single window is in front of 3-sided oriel, followed by another single window. Third-floor cross gable has one window. (Photographs 11, 12)

239 Washington Street Vacant lot, 60' x 130'

241-243 Washington Street Macadam parking lot, 56' x 150'

C 247 Washington Street 1879 Samuel N. Kellogg House 2-story brick Second Empire 3-bay 43' x 44' house on parged brownstone foundation, with set-back 26' x 33' rear 2-story addition. Cast-iron gate at sidewalk and paneled posts with finials at north and south corners of parcel, in deteriorated condition, remain from heavy elaborate cast-iron fence. (Photograph 15) Central projecting 1-story entrance foyer features fluted square columns and pedimented roof with dentil course and raking dentil courses, the whole covered by flat roof supported by small corner brackets. Small scale modillion course under its cornice. Tall 1-over-1 window north of entrance is under brownstone pediment cap. Projecting flat-roofed rectangular 5' x 12' bay south of entrance has architrave, frieze, modillion course, and bracketed cornice molding. At second floor three 1-over-1 windows have brownstone pediments. Central window is in shallow pavilion. Main cornice above features heavy architrave and modillion course under mansard, which is covered with fish-scale-shaped slate shingles. Mansard has three wood pedimented dormers, central one in pavilion which continues from second floor. Cornice at top of mansard is modest.

On north side elevation, first floor, there is single window before rear 5' x 13' projection with window in east face. Three 2-over-2s in rear 2-story section. At second floor, front section, two 1-over-1s to projection, one in its east elevation. Mansard has chimney, dormer, and dormer in projection. Second floor, rear section, three 2-over-2s as at first floor; roof line modillion course under cornice.

On south side elevation, from front, first floor, tall 1-over-1 window followed by shallow projection for tall chimney, second window, and second tall chimney shaft. Second floor same with added narrow 1-over-1 between chimneys. Heavy

cornice returns from front. Chimney, dormer, and chimney are in mansard. Tall brick 1-story addition to west has cast-stone entrance and three 8-over-8 windows with flat muntin bars in sandwich.

Heavy cornice continues across rear of main block, thus completing four elevations for this feature. There are two dormers in mansard, with chimney to north. First-floor rear of rear block is partially covered by added enclosed frame 8' x 17' entry porch. There are two 1-over-1s at second floor. (Photographs 13, 14, 15)

## 8. STATEMENT OF SIGNIFICANCE

Certifying official has considered the significance of this property in relation to other properties: Nationally:\_\_\_ Statewide:\_\_\_ Locally: x

Applicable National

Register Criteria: A x B\_\_\_ C x D\_\_\_

Criteria Considerations

(Exceptions): A\_\_\_ B\_\_\_ C\_\_\_ D\_\_\_ E\_\_\_ F\_\_\_ G\_\_\_

Areas of Significance:

ARCHITECTURE/SOCIAL HISTORY

Period(s) of Significance

c. 1870 - 1952

Significant Dates

NA

Significant Person(s): NA

Cultural Affiliation: NA

Architect/Builder: Harold L. Brown

State Significance of Property, and Justify Criteria, Criteria Considerations, and Areas and Periods of Significance Noted Above.

## Summary

The Washington Street Historic District is the only group of houses remaining from the mile-long Grand Avenue or *boulevard* of large and elaborate residences created along Washington Street in the fourth quarter of the 19th century. Erection of the State Capitol in the 1870s at the north end of Washington Street prompted its selection as a fashionable address for the many prominent and wealthy people to build homes. Early in the 20th century fashion favored Asylum Hill and the West End in Hartford, leaving Washington Street to deteriorate. The district provides a visual and bricks-and-mortar brief summary of the historic architecture and gracious living of the late 19th century.

## History

As the city of Hartford developed from its 17th-century founding, desirable residential neighborhoods gradually but steadily moved westward from the Connecticut River. Early settlers built houses on streets running parallel with the river, a block or so away from it, to the west. River commerce soon claimed these streets, causing residents to seek residential locations further to the west. Advent of the railroad in 1839 to a terminal close to Main Street continued and reinforced this trend. By mid-19th century, several alternatives to the riverfront developed, including Asylum Hill to the west, Charter Oak Place and Wethersfield Avenue to the south, North Main Street to the north, and Washington Street as neighbor to the Capitol built in the 1870s. Washington Street's wide flat tree-lined roadway presented an auspicious appearance and lent itself to such events as sleigh racing in the wintertime. But in the 20th century the westward movement prevailed, Asylum Hill extending with great success in fashion to the West End. Washington Street was one of the contenders that lost favor.

The Washington Street Historic District is a remnant and reminder of a once grand residential street. Insurance company executives, bankers, industrialists, men important in government, and wealthy widows lined Washington Street with their large and visually imposing residences. The city atlases vividly portray the development. The 1869 atlas shows only two houses on the west side of the street, Kellogg at 247 Washington Street, and Goodrich at 207 Washington Street. By the 1880 atlas they had been joined by 215, 217, and 214-243 Washington Street and the Baptist Church at the corner of Jefferson Street. 233 Washington Street came at century's end and 239 Washington Street early in the new century.

Two 19th-century houses stood, in sequence, one after the other, at 207 Washington Street. The first, before 1869, was a brick structure owned by William H. Goodrich,<sup>1</sup> who was a partner with United States Senator and Civil War General Joseph R. Hawley in Hawley, Goodrich & Co., publishers of *The Hartford Courant*. By 1896 this house was replaced by a frame structure of different footprint lived in by the Snow family. In 1937 Alice Snow Burnhill of New York City sold the land, only, the house no longer standing, to Asa J. Dion, M.D. The 1940 Hartford City Directory lists Asa J. Dion, physician, with office and residence 207 Washington Street. The Dion family continued to live in the house through 1948, when they moved to West Hartford, and 207 Washington Street functioned as a medical office. Asa J. Dion sold the property to Attorney J. William Gagne in 1979, 42 years after he bought it.

Although Second Empire 215 Washington Street was erected c. 1875, its ownership by James Clark first appears in the 1896 atlas. No biographical information is at hand regarding James Clark. The 1909 atlas shows Thomas F. Cannon as owner, but again there is no biographical detail in the directories. In 1920 owner was the Thomas F. Cannon Estate.

The Italianate block at 217 Washington Street originally had an ell of conventional size, no doubt being the service wing for the house. At about the turn of the century, the ell was replaced by the present full-sized block. The six infilled doors of the rear elevation suggest that the building became apartments for six families.

An institutional presence has occupied the northwest corner of Washington and Jefferson Streets, now the Salvation Army at 225 Washington Street, throughout the entire history of the district. The Salvation Army building replaced the Memorial Baptist Church, which, well set back from Washington Street, faced south at 182 Jefferson Street. Organized in 1884, incorporated in 1889, it was a red brick structure with pointed-arched Gothic Revival windows. In the 1950s the premises became the Greek Orthodox Church, St. George, before being sold to the Salvation Army in 1966.

Across Jefferson Street, Mary Clark owned a large parcel which became the sites of 233 Washington Street and 239 Washington Street. Irving S. Covell (1851-11937) bought the corner lot from her in 1898, built the elaborate Queen Anne frame house at 233 Washington Street, and continued to own it to 1919. Apparently, he never lived in the house, although in 1902 and 1904 he is listed as conducting business at 187 Jefferson Street while residing in Colebrook River. Covell is an enigmatic figure, turning up in the 1920 census as boarding in Windsor. He is buried in Cedar Hill Cemetery whose records state that he was a retired traveling salesman. Consistent with that occupation, his mother-in-law's obituary mentions one daughter, Mrs. I. S. Covell of Chicago. C. Edward Buckland, who had an insurance/brokerage office at 95 Pearl Street during the years 1909-1921, lived at 233 Washington Street for a time around 1914, during Covell's ownership. The property changed hands in 1921, 1923, and 1924 (see Figure 2) before being purchased in 1924 by John I. Taylor and Oscar W. Modeen. Their Taylor & Modeen Funeral Home occupied the premises for almost 50 years, to 1971.

Dorothy E. Donaghue bought the other half of Mary Clark's parcel and built her masonry house at 239 Washington Street by 1909. In 1914 the Reverend Irving H. Berg, pastor South Congregational Church was in residence, and the 1917 atlas indicates that the church owned the property.

The Maslen family were long time owners and residents of half of the brick double house at 241-243 Washington Street. Stephen Maslen (1845-1909) conducted a monument business in Hartford, the Stephen Maslen Corporation,<sup>2</sup> from c. 1870 to about

<sup>1</sup> Apparently Goodrich owned the house but did not live there. City directories show his residence nearby at 90 Buckingham Street.

<sup>2</sup> The firm was continued by Karl J. Beij (d. 1934), whose silent partner was William Williams. John Zito (d. 1989) became the owner in 1943, and the company continues today as Beij, Williams & Zito. The Maslen records are in possession of the present owners. The Maslen order books show sketches with measurements, prices, and other details for several Connecticut Civil War monuments, including GRIFFIN A. STEDMAN MONUMENT, Barry Square, Hartford. In addition, there is a photograph of a model of the

the time of his death. His output included five Connecticut Civil War monuments. His wife Harriett [sic] continued to live there in 1914; George S. Maslen appears in 1917. Other residents of this building included Frank Svetsky, investments, and William Caswell, in 1896. Seymour Kashmann, proprietor of a food market on Mulberry Street downtown, was an early-20th-century resident. The double house was demolished before 1980.

Samuel N. Kellogg (1820-1904) built 247 Washington Street in 1879 upon his return to Hartford. Born in New Hartford, Kellogg as a young man worked in the highly successful Hartford dry goods business conducted by the Collins family. He followed a member of the family to St. Louis to open a store there, where he stayed from 1850 to 1867. Upon moving to Chicago, he suffered loss in the Great Chicago Fire of 1871. Kellogg's wife was Helen S. Cooley, sister of Francis B. Cooley, principal in the Cooley Company, investment brokers. Samuel N. Kellogg left an estate valued at \$217,404. Helen S. Kellogg was living in the house as late as 1914.

The Washington Street Historic District made history of a sort in November 2002 as the object of greater attention on the editorial page of the Hartford daily newspaper, *The Hartford Courant*, than ever before accorded to a historic preservation issue. The *Courant* devoted two full lead columns on the editorial page to a demolition issue related to the district. (Figure 3)

## Architecture

The Italianate, Second Empire, and Queen Anne were the popular architectural styles during the years when the district's houses were being constructed, and these styles are represented by good examples in the district. The district's brief period of growth coincided with the Second Empire style's brief period of acceptance. Accordingly, the Second Empire style is articulated in two of the district's oldest buildings, 215 Washington Street and 247 Washington Street. Both are brick with mansard roofs and classical revival detailing, and both are in a reasonably good state of historic preservation. These two Second Empire houses constitute 40% of the district's five contributing resources, a far higher percentage than found in the city as a whole, a circumstance attributable to the coincidence that the district's moment in fashion occurred during the short-lived period when the Second Empire style was in vogue.<sup>3</sup>

The Italianate house at 217-219 Washington Street is less well-preserved, having lost character-defining trim from the front elevation, and have acquired a large second section to the rear. Nevertheless, the blockiness, central entrance, window trim and overhanging roof still read the Italianate style clearly.

233 Washington Street, the Queen Anne house, has suffered the most deterioration, but all the asymmetry, fanciful porches, towers and irregular groundplan of the Queen Anne are still in place. The resource has rear additions but the main block has not suffered alterations, simply lack of maintenance.

The Federal Revival house at 207 Washington Street, while of a more recent period, is well done, and quite well-preserved.

The Salvation Army presence is compatible with the district's historic inclusion of an eleemosynary institution. Although not a church, it continues the tradition of public service and social uplift. The brick building's emphasis on large curves in its blind and open arcade and in the design of the Washington Street facade are contemporary, well thought out, and consistently carried through.

---

monument. It is the only record of a model for a Connecticut Civil War monument to come to hand. The Maslen sketch of SOLDIERS' MONUMENT, Suffield, is for the pedestal, without the figure, suggesting that Maslen may have cut the pedestal and bought the figure. Maslen's order book for 1904, p. 321, records particulars of his CIVIL WAR MONUMENT, West Hartford. The Maslen records, in the possession of Beij, Williams & Zito, constitute an important primary source of information about Connecticut Civil War monuments.

<sup>3</sup>See Vogels for a definitive discussion of the Second Empire style in Hartford architecture.

## 9. MAJOR BIBLIOGRAPHICAL REFERENCES

*Atlas of Hartford City and County.* Hartford: Baker & Tilled, 1869. Plate 25

*Atlas of the City of Hartford, Connecticut.* Springfield, Massachusetts: L. J. Richards & Co., 1896. Plate 11.

*Atlas of the City of Hartford and the Town of West Hartford, Connecticut.* Springfield, Massachusetts: L. J. Richards & Co., 1909. Plate 8

*Atlas of the City of Hartford and the Town of West Hartford, Connecticut.* New York: Sunburn Map Company, 1917. Plates 1, 11.

*City Atlas of Hartford, Conn.* Philadelphia: GM Hopkins, 1880. Plate Q.

Coeval, Irving S. U.S. Census, Windsor, Connecticut, 1920.

Burial records, Cedar Hill Cemetery, Hartford, Connecticut.

*Hartford City Directory.* Various years.

Hartford Land Records

207 Washington Street. 718/607, 6/11/1937; 767/250; 867/379, 7/26/1950; 1046/419; 1678/55, 1/10/1979; 3628/325, 10/11/1995

215 Washington Street. 4022/334, 10/26/1998.

217-219 Washington Street. 4070/182, 3/1/1999.

225 Washington Street. 674/665, 6/10/1931; 706/153, 10/16/1934; 914/512, 2/89/1953; 1162/168, 4/19/1966;

233 Washington Street. 4241/294. Also, see Exhibit 1.

239 Washington Street. 4241.294.

241-243 Washington Street. 4189/199.

247 Washington Street 261/478, 9/29/1898; 4189/199.

Kellogg, Samuel N. Obituary, Mary Morris Obituaries Collection, vol. K, p. 101, Connecticut Historical Society Library.

Chummier, Merle, ed. *Hartford Architecture, Volume Two: South Neighborhoods.* Hartford: Hartford Architecture Conservancy, 1980.

Ransom, David F. "Connecticut's Monumental Epoch: A Survey of Civil War Memorials." *The Connecticut Historical Society Bulletin* 58(1993)1-4.

Vogels, Heidi Chelsea. "Images of an Era: A Study of the Second Empire Architectural Style in Hartford, Connecticut, 1865-1883." Trinity College American Studies term paper, 1998.

Previous documentation on file (NPS):

\_\_\_ Preliminary Determination of Individual Listing (36 CFR 67) has

been requested.

\_\_\_ Previously Listed in the National Register.

\_\_\_ Previously Determined Eligible by the National Register.

\_\_\_ Designated a National Historic Landmark.

\_\_\_ Recorded by Historic American Buildings Survey: # \_\_\_\_\_

\_\_\_ Recorded by Historic American Engineering Record: # \_\_\_\_\_

## Primary Location of Additional Data:

☐ State Historic Preservation Office☐ Other State Agency☐ Federal Agency☐ Local Government☐ University☒ Other: Specify Repository: Connecticut Historical Society Library

## 10. GEOGRAPHICAL DATA

Acreage of Property: four

UTM References: Zone Northing Easting Zone Northing Easting

A	_____	B	_____
C	_____	D	_____
E	_____	F	_____

## Verbal Boundary Description:

The district boundary is shown by the heavy dotted line on the District Map, Figure 1.

## Boundary Justification:

The district boundary encompasses the remaining cluster of late-19th-century architecturally significant houses and associated properties that lined Washington Street a century ago.

## 11. FORM PREPARED BY

name/title David F. Ransom, reviewed by John F.A. Herzan, National Register Coordinatororganization Architectural Historian date November 2002street & number 83 Avery Heights telephone 860 953-8626city or town Hartford state CT zip code 06106

**List of Figures**

Figure 1. District Map

Figure 2. Title search, 233 Washington Street

Figure 3. Editorial page, *The Hartford Courant*, November 11, 2002

**List of Photographs**

Photographs were taken by David F. Ransom in November 2002. Negatives are on file at Connecticut Historical Commission.

**Photograph 1**

General view of north part of district,  
207 Washington Street on right,  
looking southwest

**Photograph 2**

General view of north part of district,  
225 Washington Street on left,  
looking northwest

**Photograph 3**

General view of south part of district,  
247 Washington Street on left,  
looking northwest

**Photograph 4**

207 Washington Street  
View southwest

**Photograph 5**

207 Washington Street  
Detail of front elevation  
View southwest

**Photograph 6**

215 Washington Street  
View southwest

**Photograph 7**

215 Washington Street  
Detail of front porch  
engaged column  
View southwest

**Photograph 8**

217-219 Washington Street  
View west

Photograph 9

225/217 Washington Street  
connector  
View west

Photograph 10

225 and 217 Washington Street  
View northwest

Photograph 11

233 Washington Street  
View southwest

Photograph 12

233 Washington Street  
View northwest

Photograph 13

247 Washington Street  
View southwest

Photograph 14

247 Washington Street  
View northwest

Photograph 15

247 Washington Street  
Detail of front gate  
View west



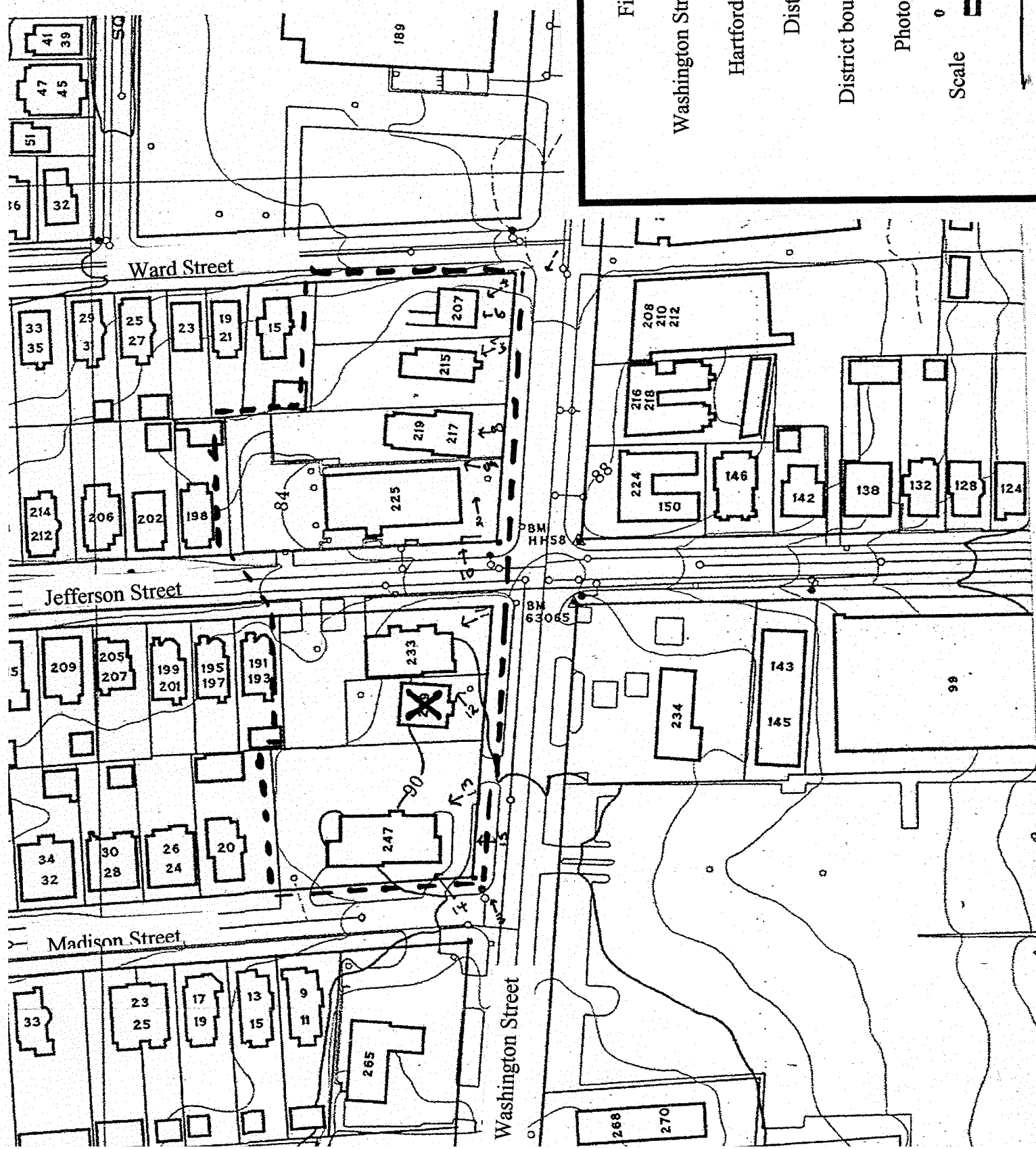


Figure 1

Washington Street Historic District

Hartford, Connecticut

District Map

District boundary - - -

Photo key ↗

Scale 0 50 100

N ↑

History of 233 Washington St (87 Washington St. before 1915)

Title search

11-1-1867	Harriet M. Hall	
	David Clark	124-192
	Mary Clark	
9-29-1898	Irving S. Covell	261-478
7-8-1919	Lucius H. Elmer	474-311
10-13-1921	William Lutwack	514-594
8-14-1923	Jacob Rome	553-75
9-3-1924	John I. Taylor & Oscar W. Modeen	569-273
6-20-1947	John I. Taylor, Jr.	816-345
12-6-1954	Grace E. Taylor	948-130
11-4-1968	Taylor & Modeen Realty	
	11-4-1968 From William Taylor	1215-282
	11-4-1968 From Taylor & Modeen	1215-280
	11-5-1968 From Grace Taylor Est.	1215-276
1-4-1971	Arthur L. Spada	1262-211
1-2-1972	Nancy L. Spada	1290-245
1-10-1977	Joseph F. Skelley	1552-79
3-22-1978	Valdis, Vinkels, Trustee	1619-286
9-2-1983	Joseph S. Guiliano & John R. Rimscha	2093-156
5-26-2000	Gennaro J. Capobianco	4241-294

City directories

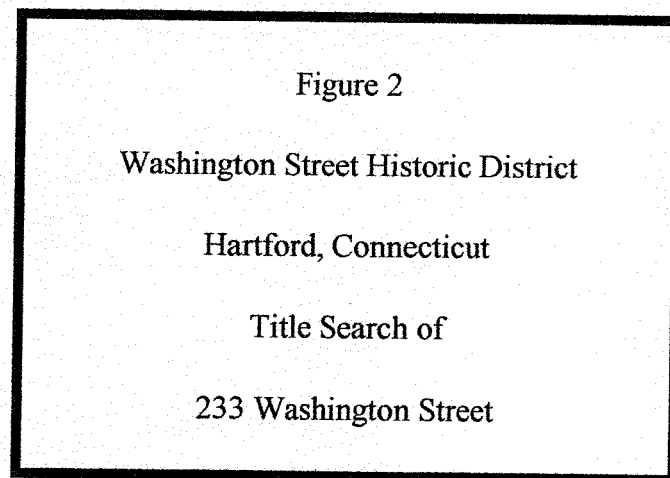
Pre-1914 – Listings by person (h = house; b = boards)

1896 Irving S. Covell listed at 36 Pratt  
1898 Irving S. Covell listed at 86 Pratt, Syndicate Prem. Co. at 78 Pearl  
1899 Irving S. Covell listed at h. 114 Huntington, Synd. Prem. Co.  
1900 Irving S. Covell listed at h. 114 Huntington, Synd. Prem. Co.  
1901 Irving S. Covell listed at h. 114 Huntington  
1902 Irving S. Covell listed at b. 187 Jefferson  
1903 Irving S. Covell listed at 187 Jefferson, h. Colebrook Riv.  
1904 Irving S. Covell listed at 187 Jefferson, h. Colebrook River  
1905 Irving S. Covell listed at 187 Jefferson, h. Colebrook River  
1906 Irving S. Covell no longer listed in City Directory (same for 1907-1910)  
1909 C. Edward Buckland listed at 21 Wethersfield Ave.  
1911 C. Edward Buckland listed at h. 66 Oxford, insurance agent 783 Main  
1912 C. Edward Buckland listed at h. 273 Oxford St.  
1913 C. Edward Buckland listed at h. 273 Oxford St.

Listings for 233 Washington St. (known as 87 Washington St. before 1915)

1914 C. Edward Buckland, o. 95 Pearl Rm 310 – also listed: C. Edward Buckland, Jr.  
(clerk, Aetna Life Ins., b. 87 Washington)  
1915 C. Edward Buckland, ins. broker

1916	C. Edward Buckland, house 233 Washington St.	
1919	Charles N. Banning, clerk Phoenix Ins. Co.	
1921	William J. Davis, mach.	
1924	Taylor & Modeen at 420 Main St.	
1925	Taylor & Modeen	Minnie S. Buck
1930	Taylor & Modeen	Marcus Freeman
1936	Taylor & Modeen	Earl C. Miley, emp, r door
1941	Taylor & Modeen	Elton M. Johnson, embalmer
1970	Taylor & Modeen	Oliver L. Jones
1971	Skelley, Walsh, Shaughnessy	Spada & Roisman
1975	Skelley & Walsh	Spada & Vinkels
1981	Vinkels, Skelley, Williams & Rottner	
1985	No listed occupants	
1988	No listed occupants	



# The Hartford Courant.



**JACK W. DAVIS JR.**  
*President, Publisher and Chief Executive Officer*

**JOHN J. ZAKARIAN**  
*Editorial Page Editor and Vice President*

**ROBERT K. SCHREFF**  
*Deputy Editorial Page Editor*

**THE OLDEST CONTINUOUSLY  
PUBLISHED NEWSPAPER IN AMERICA**

**PETER B. PACH**  
*Town Editorials Editor*

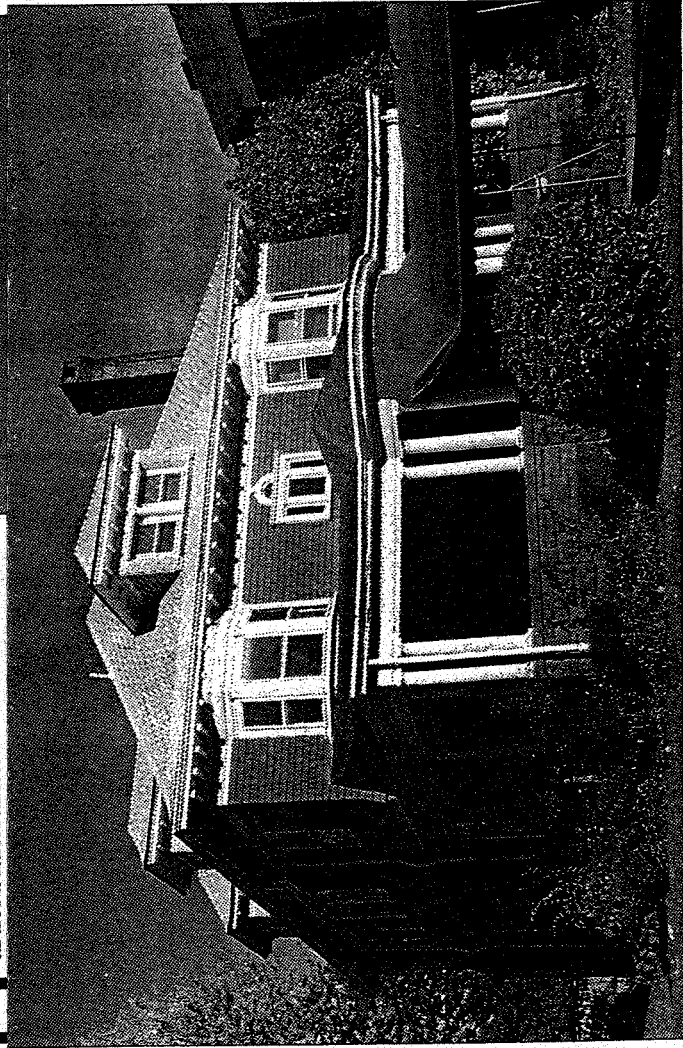
**CAROLYN LUMSDEN**  
*Commentary Editor*

**LEW BRESEE**  
*Letters Editor*

## EDITORIALS

### Save These Historic Homes

**H**artford funeral home owner Gennaro



**THIS 1902 COLONIAL REVIVAL HOUSE on Farmington Avenue was built for the president of G. Fox & Co. and is listed on the National Register of Historic Places.**

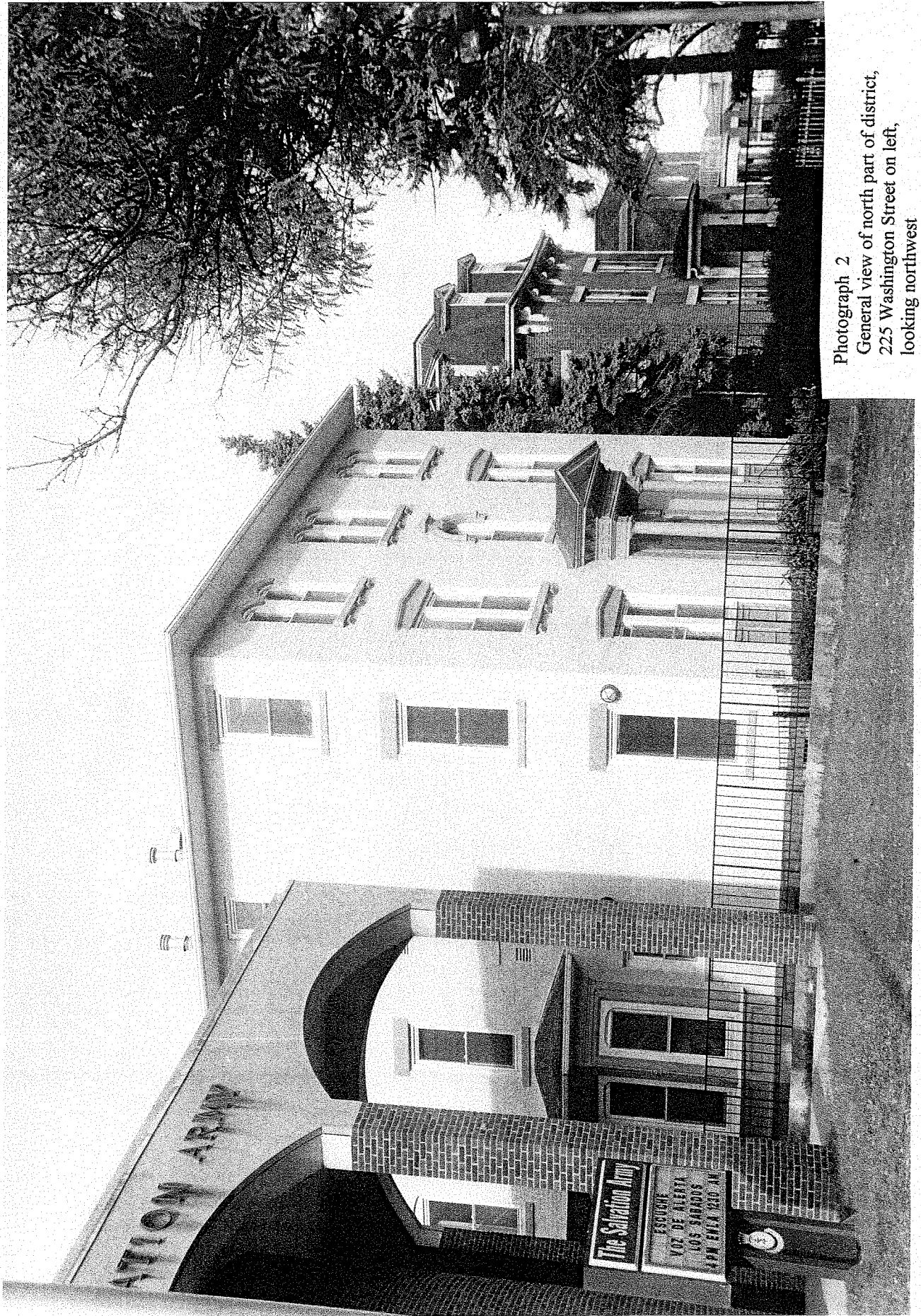
Figure 3

Washington Street Historic District  
Hartford, Connecticut



Photograph 1  
General view of north part of district,  
207 Washington Street on right,  
looking southwest



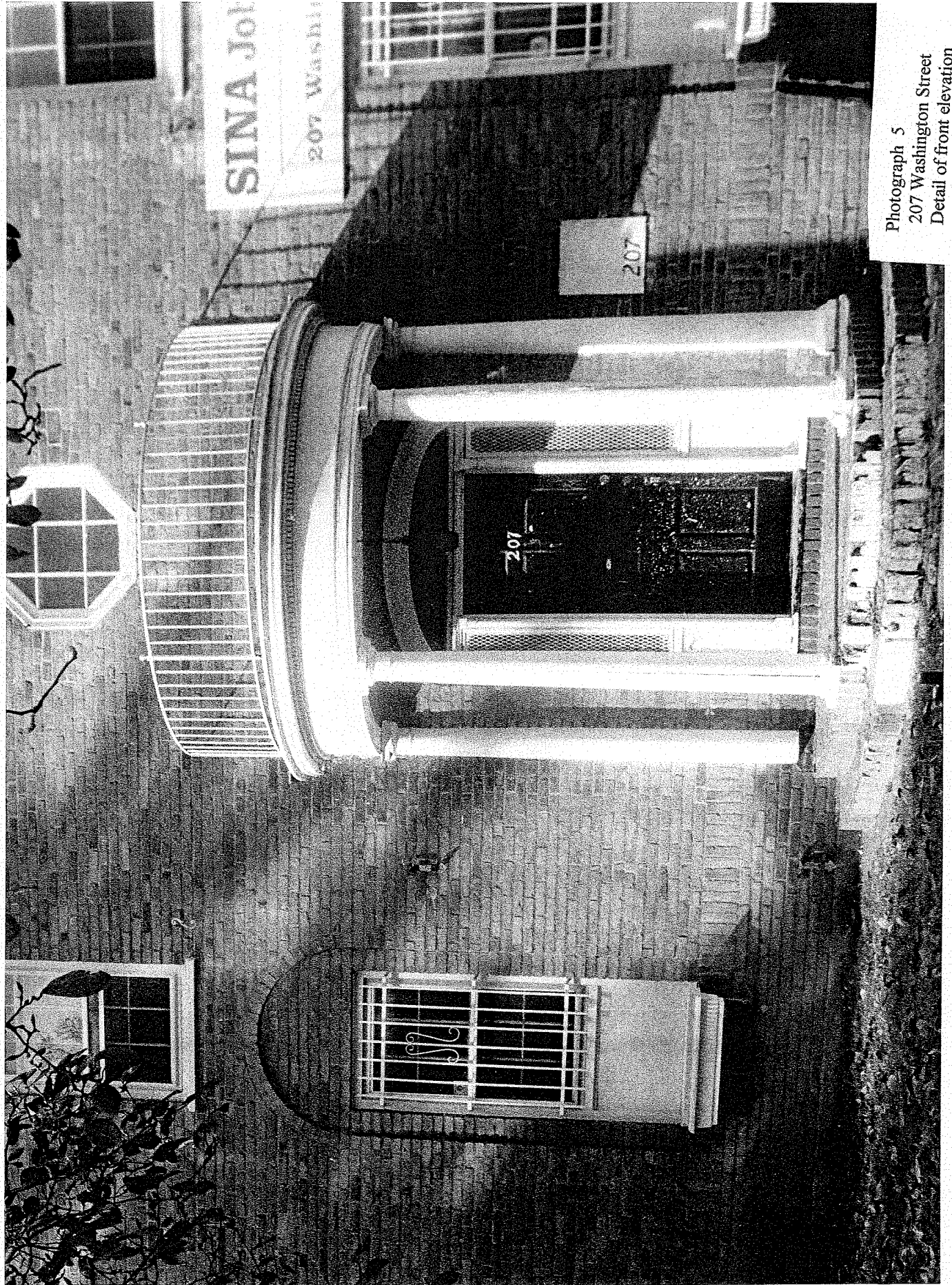


Photograph 2  
General view of north part of district,  
225 Washington Street on left,  
looking northwest



Photograph 3  
General view of south part of district,  
247 Washington Street on left,  
looking northwest





Photograph 5  
207 Washington Street  
Detail of front elevation  
View southwest





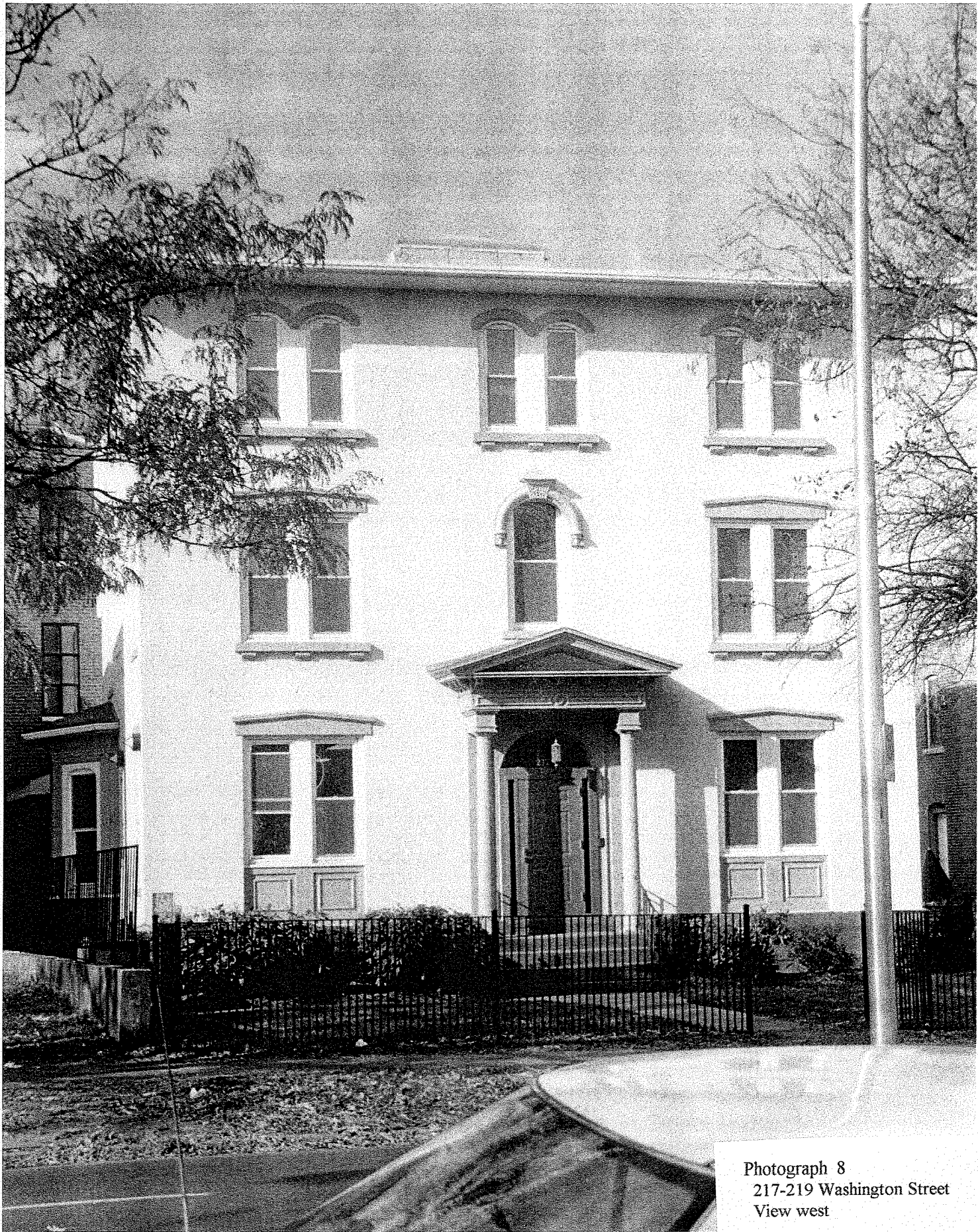
Photograph 6  
215 Washington Street  
View southwest



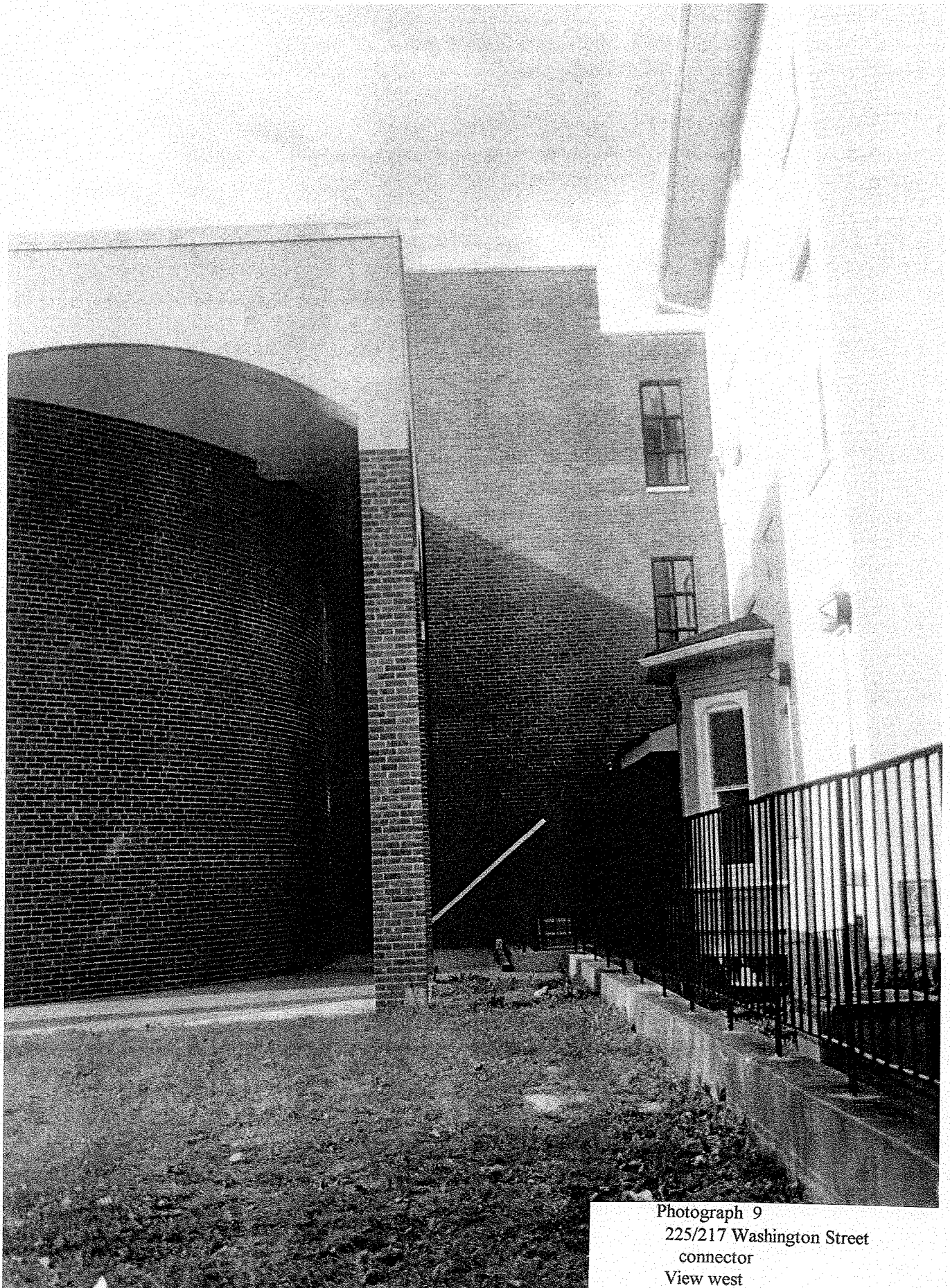


Photograph 7  
215 Washington Street  
Detail of front porch  
engaged column  
View southwest



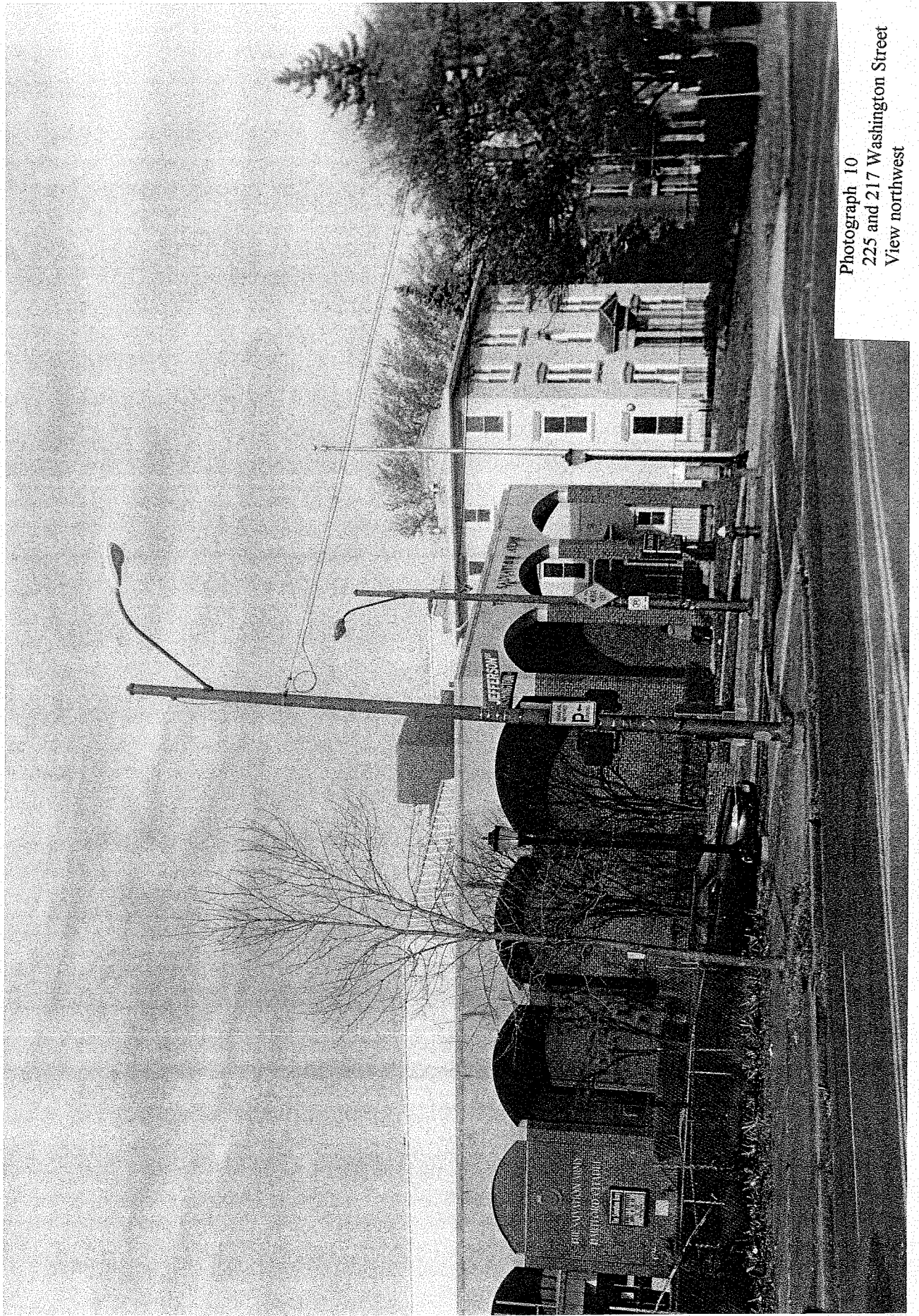


Photograph 8  
217-219 Washington Street  
View west

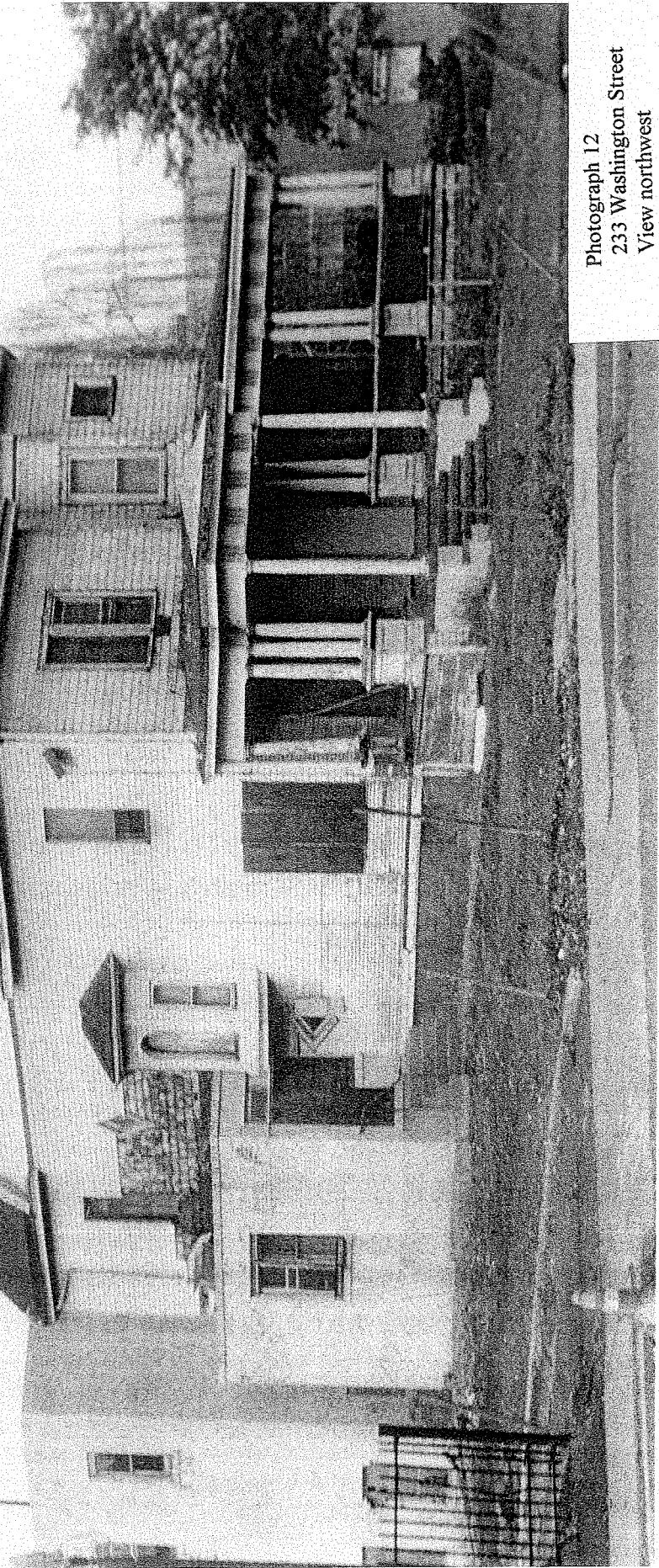


Photograph 9  
225/217 Washington Street  
connector  
View west





Photograph 10  
225 and 217 Washington Street  
View northwest



Photograph 12  
233 Washington Street  
View northwest



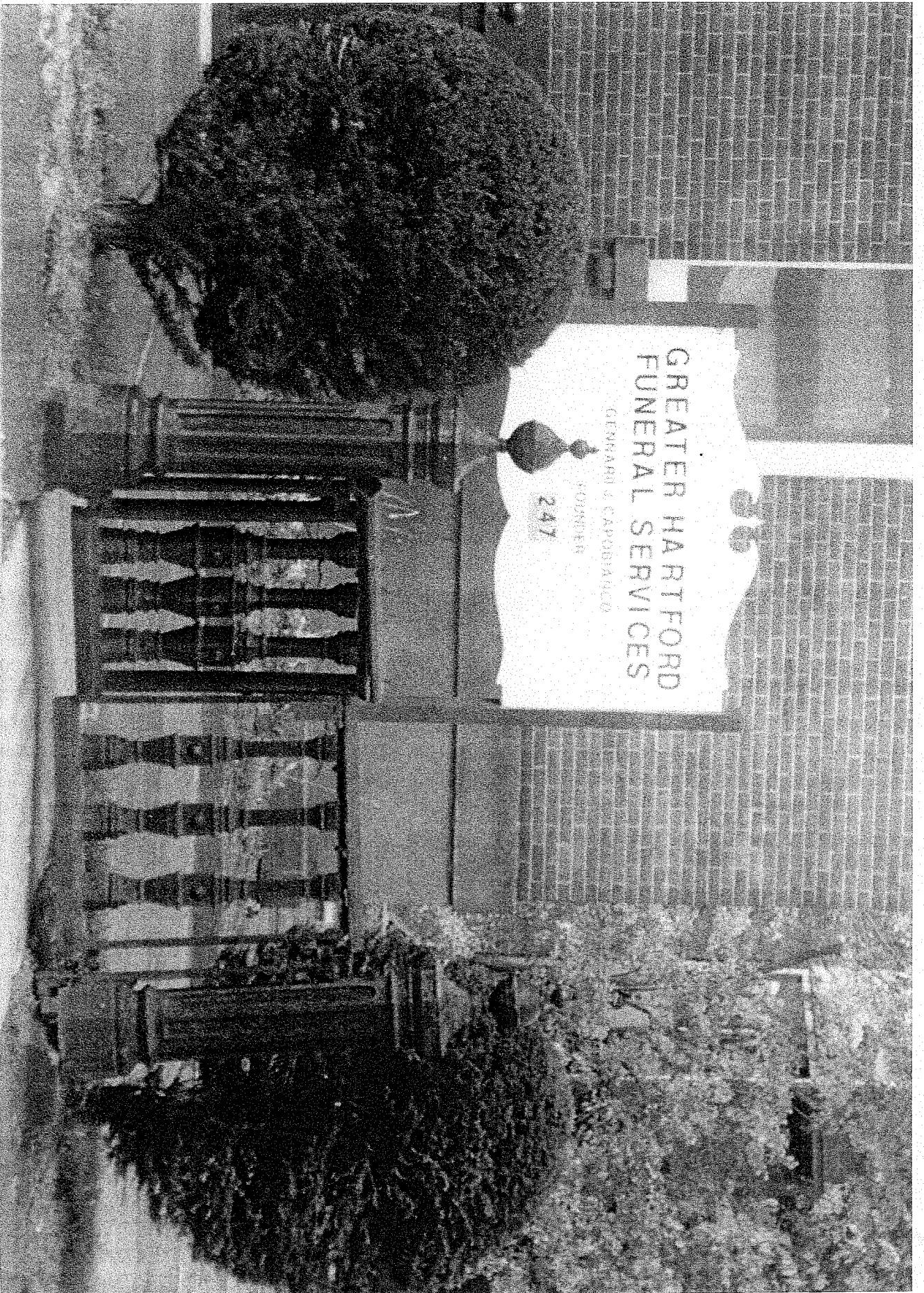


Photograph 13  
247 Washington Street  
View southwest



Photograph 14  
247 Washington Street  
View northwest





Photograph 15  
247 Washington Street  
Detail of front gate  
View west